

---

## Link 16 Amalgamated Remote Management System

A a a u a  
a a u a a a , a a a  
a a a a a u - , u a  
a a a .

### D C D E C

The job of the Link 16 Network Manager is to plan, manage, modify and troubleshoot a tactical data link network distributed over a wide geographical area and often locked onto GPS time. Existing systems employ a single viewpoint solution, but L3Harris has a distributed approach called the Amalgamated Remote Management System (ARMS) that provides a multi viewpoint solution to network management.

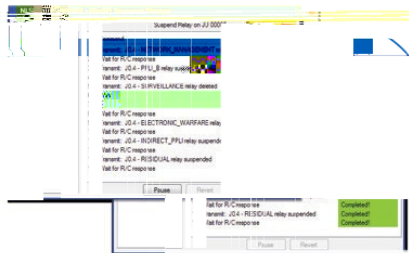
ARMS connects over an IP-based Wide Area Network to multiple remote terminals, including JTIDS, MIDS-LVT, MIDS JTR interactively control Link 16 relay platforms, allocate capacity amongst active platforms and disable transmission capability of individual platforms when required by frequency usage restrictions.

Together, ARMS and FLEXOR provide a powerful dynamic Link 16 network management system that share not necessary

- > Works with all MIDS-LVT, MIDS JTRS, STT and BATS designed for CMN and CCR
- > Capable of directly hosting more than 30 terminals simultaneously
- > Operates in parallel with existing C2 systems with zero footprint integration
- > Provides up-to-date, system-wide status with drill-down capability of terminal BIT for fault isolation
- > Real-time Frequency Clearance Agreement (FCA) compliance monitoring
- > C2 Adjunct capability provides a single, consolidated tactical feed for all hosted ground radios
- >

**F E E E C E**

The following graphic shows an over the air sequence in process. The sequence step status is updated upon completion, either successful or failure, of each step. An entire sequence is only marked as complete if all of the steps are completed successfully.



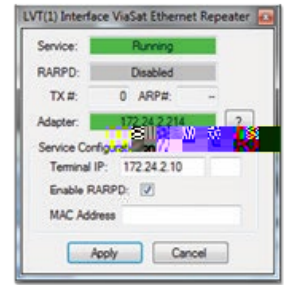
**B A E E**

The BRAIN (Browser Ready Accessible Insider Knowledge) is a tool that ARMS uses to clearly define and explain what alerts mean to the end user, as well as view data that is event driven within the network. BRAIN also serves as a data repository, providing the operator a method to define what these alerts and events mean to the end user in real time.



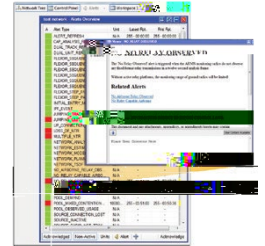
**E A B E E A E**  
**A D E A**

The LVT(1) Interface Ethernet Repeater is the newest addition to the ARMS Software Suite and simplifies host Ethernet connections from ANY Windows operating system.



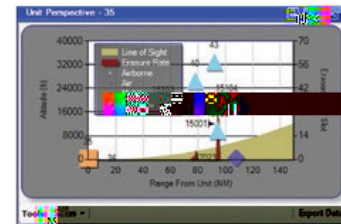
**E E C E D A E**  
**A C E B A**

ARMS alert and event drill-down capability includes online access to the ARMS knowledge base, BRAIN, which can be customized for local operations.

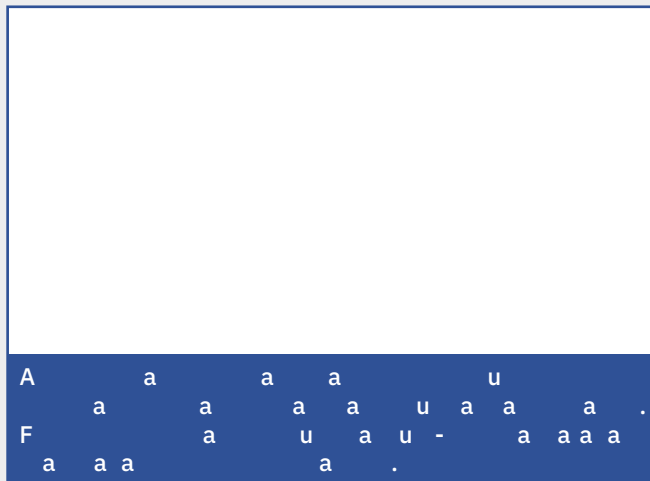


**E E C E**

The new "Unit Perspective" chart provides the network manager an easy to understand presentation of how each radio perceives the active network. At a glance, the network manager can synthesize how the network is connected to see beyond the tactical messaging.



- F A E A C E C E**
- A u**  
**u a a u a :**
- > Centralized Analysis Process (CAP)
  - > ARMS User Interface (AUI)
  - > DERG Network Analyzer (DNA)



**A a a a u**  
**a a a a u a a a**  
**F a a a u a u - a a a a**

These item(s)/data have been reviewed in accordance with the International Traffic in Arms Regulations (ITAR), 22 CFR part 120.11, and the Export Administration Regulations (EAR), 15 CFR 734(3)(b)(3), and may be released without export restrictions.

L3Harris Technologies is an agile global aerospace and defense technology innovator, delivering end-to-end solutions that meet customers' mission-critical needs. The company provides advanced defense and commercial technologies across air, land, sea, space and cyber domains.